

Postal Markings of the 1904 World's Fair

The St. Louis World's Fair was planned to open in 1903 on 1272 acres in Forest Park Missouri adjacent to the campus of Washington University. Advertising for the Fair started in 1900. Construction delays, and size forced a delay of the opening until May 1, 1904. The purpose of this exhibit is to show an example of postal marking used at the main Post Office and on the World's Fair grounds.

Plan of Exhibit

- Barry Machine used only in 1900
- International Machine used 1901, with 1903 slogan
- International Machine used 1902-4, without 1903 slogan
- World's Fair Station Cancels 1902
- Annex Station 1-1-04
- Steel Die Hand Cancel 5-02-04
- P.O.DEP'T.EX International Machine Cancel 6-10-1904.
- Exposition Station Cancels on the grounds 7-01-04
- Rubber Hand Cancel 7-04-1904
- Epilog: New Finds, Manufacturers, Liberal Arts and Machinery Building

Significant items are marked in green = S

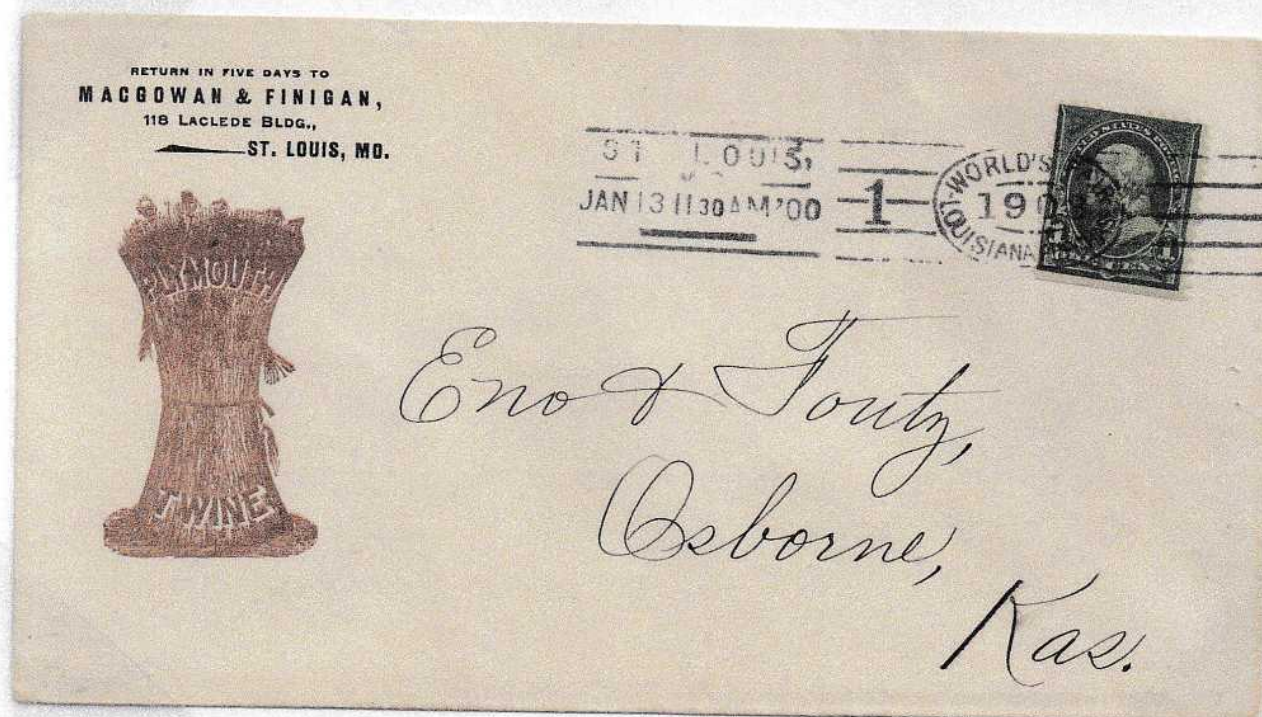
Original research/discovery is noted with a blue = O

Earliest known use = EKU Latest known use = LKU

Barry Machine 1900

TYPE	EKU	LKU
STL04-11	1 January 1900	24 February 1900
STL04-12	17 February 1900	4 May 1900
STL04-13	4 January 1900	5 May 1900

"Bomar"



First slogan advertising machine. Straight line date stamp and number 1 in the killer. Type STL04-11 EKU 1 January 1900, LKU 24 February 1900. The 1 cent stamp pays the unsealed third-class rate.

Postal Markings of the 1904 World's Fair

Background: Following the success of both the 1898 Trans-Mississippi and 1901 Pan-American sets of commemorative stamps, it was decided early on that it would be desirable to release a set of stamps (and promotional postmarks) to coincide with the St. Louis World's Fair, which marked the centennial of the 1803 Louisiana Purchase. In 1902, the opening date of the fair was changed from late 1903 (the actual anniversary), to April 1, 1904, to give the World's Fair Committee needed time to raise money and complete construction of the grounds. Unlike some previous commemoratives, the Louisiana Purchase commemoratives were to be sold only during the duration of the exposition, and all remaining stamps were recalled nationwide and destroyed when the fair closed. The stamps' size made them unpopular with both collectors and non-collectors, making proper in-period uses of the set challenging to locate.

Why postal markings: To include all postal markings provides the greatest opportunity and challenge for an in-depth study of what cancellations were applied at the St. Louis Main Post Office before the Fair, the annex during the fair, and all postal markings inside the Fair grounds.

Treatment and Scope: This exhibit (the most comprehensive of its type ever assembled for this issue) studies specifically the postal markings used for the St. Louis World's Fair. With the first slogan cancellation in 1900 to advertise the Fair and ending with the findings of 3 new, never mentioned by Bomar, cancellations on the grounds of the World's Fair. Although

The exhibit is arranged as follows:

1. Barry Machine cancels, 1900
2. International Machine, with 1903 cancels, 1901
3. International Machine, without 1903 cancels, 1902-4
4. World's Fair Station cancels, 1902
5. Annex Station 1904
6. Steel Die Hand cancels, 1904
7. PO DEPT EX cancels, 1904
8. Exposition Station cancels, 1904
9. Rubber Hand cancels, 1904
10. Epilog: Dramatic New Findings

I needed to understand basic machine cancellations, different machines and studied to find their uses. Original research allowed me to make "finds" for known items like EKU, as well as making several original finds, as noted. Persistence over a long period of time was required to complete this study.

Number recorded means it has been published in a reference or article.

Selected Significant items:

- Page 6** Although Bomar lists machine 3 being used, no photo has been shown. I have search for 25 years and have not found one. I attended up to 34 stamp shows per year to no avail. I have contacted many stamp dealers and it's on their want list. I placed an ad in USSS And no response. This year I have paid for a larger ad offering \$50 for an item listed by Bomar for \$5.00. It seems Bomar has made an error just like item ST. L04-02 which was proven to be a fake
- Page 8** EKU of July 2, 1902
- Page 9** Top: EKU of June 30, 1902
- Page 11** Bottom: very unusual split cancel
- Page 16** Both EKU
- Page 17** **New Original work** finding of the location of the "annex" from Postal Bulletin
- Page 19** Both: "this is the mail for which you sent money"
- Page 20** Both: full set on cover
- Page 21** Both" full set on cover
- Page 22** Both Steel Die and PO DEP'T EX
- Page 23** Unique 3 cover set mentioned in Bomar
- Page 25** Probably unique full set
- Page 26** Probably unique full set
- Page 28** Bottom 2 and page 29 top are 3 Registered full sets. Bomar shows an example of a set on a legal-size cover and says "less than 5 full sets recorded. I show 3 sets
- Page 29** Bottom is the scarce General Delivery cancel of which only 16 are known
- Page 31-32** **Original research** finding 3 "new" post offices on the grounds of the Fair

References:

1. Postal Markings of United States Expositions, by William J. Bomar. First & second edition
2. Postal Markings of United States Expositions, by William J. Bomar. (CD Edition)
3. Kelleher Auction, June 25, 2019 MLG collection
4. The digitized U.S. Postal Bulletins 1880-2013 (www.uspostalbulletins.com)
5. The book of the Fair (St. Louis Exposition), by Marshall Everett 1904.